

An aerial photograph of the George Mason University campus at dusk. The sky is a mix of soft pinks and purples. The campus features several large, multi-story buildings with flat roofs and brick accents. A prominent white building with a central tower and a glass facade is visible on the left. The campus is surrounded by dense green trees. The text is overlaid in a bright yellow color.

George Mason University

Society for Marketing
Professional Services

November 11, 2009

Chuck Fanshaw

Outline

- Mason Background
- Capital Program
- Opportunities
- Tips
- Points of Contact



BUILDING
PATRIOT
PRIDE

Mason Background

- Celebrating 37 years in 2009
- Named #2 University to Watch on US News & World Report's 2009 list of "Up and Coming Schools"
- In the midst of a \$800 Million capital program



Just Completed

- Arts Building
- Engineering Building
- Recreation Athletic Complex
- Rappahannock Parking



Ongoing Construction Programs

- Construction
 - Design Build
 - Aquia Bldg (Data Center)
 - Housing 7C
 - Student Union 1 Addn/Reno
 - Krasnow Addn 2
 - CM @ Risk
 - PW Performing Arts Center
 - Founders Hall (Arlington II)
 - PW Biomedical Research Lab
 - Science/Tech 2 Addn/Reno
 - Fenwick Library Addn
 - University Hall (GMUF)



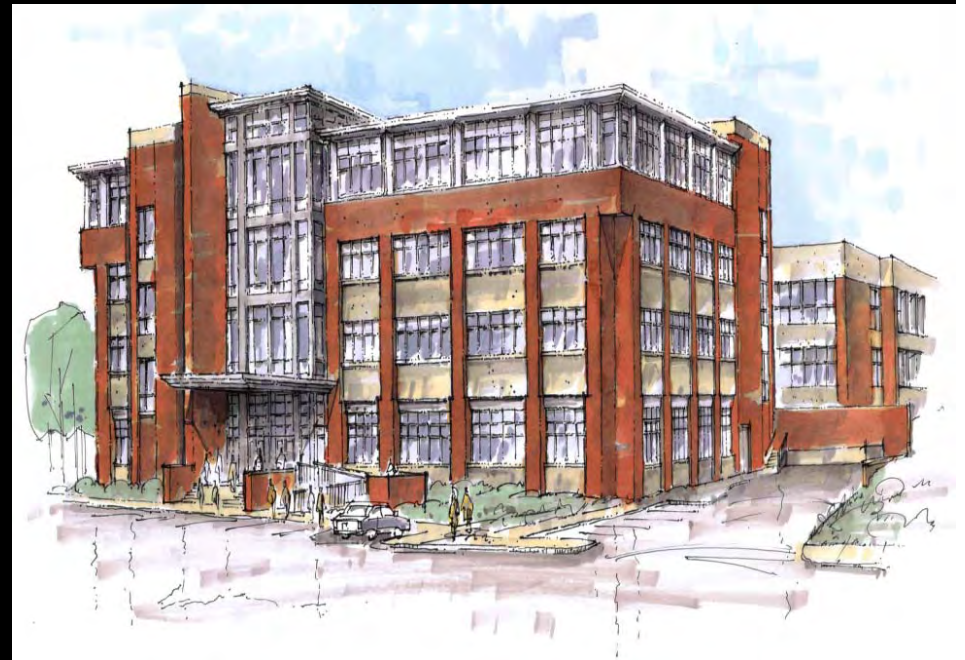
Ongoing Construction Programs

- PPEA
 - Mason Inn (Hotel/Conference Center)
 - Masonvale (Faculty Staff Housing)
- Bid
 - Performing Arts Addn



Ongoing Construction Programs

- Design and Acquisition
 - Under Design
 - Student Union 2 Renov.
 - Presidents Park, Phase 3
 - Thompson Hall Renov.
 - Fine Arts Renov.
 - D/B under procurement
 - Housing 8A (600 beds)
 - A/E under procurement
 - Potomac Science Ctr (55)
 - CM under procurement
 - Potomac Science Ctr (due 12/8)



Ongoing Construction Program

- Bids Coming Soon
 - SUB 2 Renov.
 - Thompson Renov.
 - Presidents Park Renov.



Brick Cladding
Glazed Brick Cladding at First Floor
Metal Panel Cladding
Aluminum Framed Windows & Curtain Wall
Existing Building

SOUTH WEST PERSPECTIVE

Ongoing Construction Programs


- Programming Phase
 - Smithsonian CRC Housing/Dining Design/Build RFQ January 2010?
 - Authorized non general fund capital projects ?
- On Hold
 - Field House Phase 2
 - Patriot Center Phase 2



Projects in Capital Plan

Authorized Non-general fund

- Renovate President's Park \$16M *
- Parking Deck IV \$27M
- SW Campus Dining \$15M
- West Campus Connector \$14M
- Athletic Field Improvements \$15M



Phasing &
Execution
Plan - TBD

Projects in Capital Plan

- New Legislative Changes to Funding ?
 - Chapter 1 project rules
 - More estimates
 - Funding gates
 - Longer time period
- Approved for Planning
 - Construct Campus Library Addition
 - Renovate Fine Arts
 - Potomac Science Ctr



When will Construction
\$ follow?

Upcoming Opportunities

- CM for Potomac Science Ctr – Due 12/8
- Design/Build RFQ for Smithsonian – Jan?
- Bids, 2010
 - Presidents Park, Ph3 – Feb
 - Student Union 2 – Feb
 - Thompson Hall - Feb
- A/E Contracts
 - Category “B” – Accepting packages now for everything
 - Term – Civil & full service A/E, under review
- More PPEA's

SWAM Plan

- Inclusion of Small, Women Owned and Minority (SWAM) firms is a mandatory evaluation item in all A/E, CM and D/B proposals.
- Mason is constantly looking for more SWAM partners.
- University goal for 2010 is 35%.
- We can help with DMBE registration is needed through our Supplier Diversity Manger.

Tips

- Responding to RFQ's/RFP's
 - Remember your reviewer – Easy to find!
 - Succinct
 - Relevance
 - Minor modifications to forms OK
- Sustainability (LEED)
- BIM
- The Details

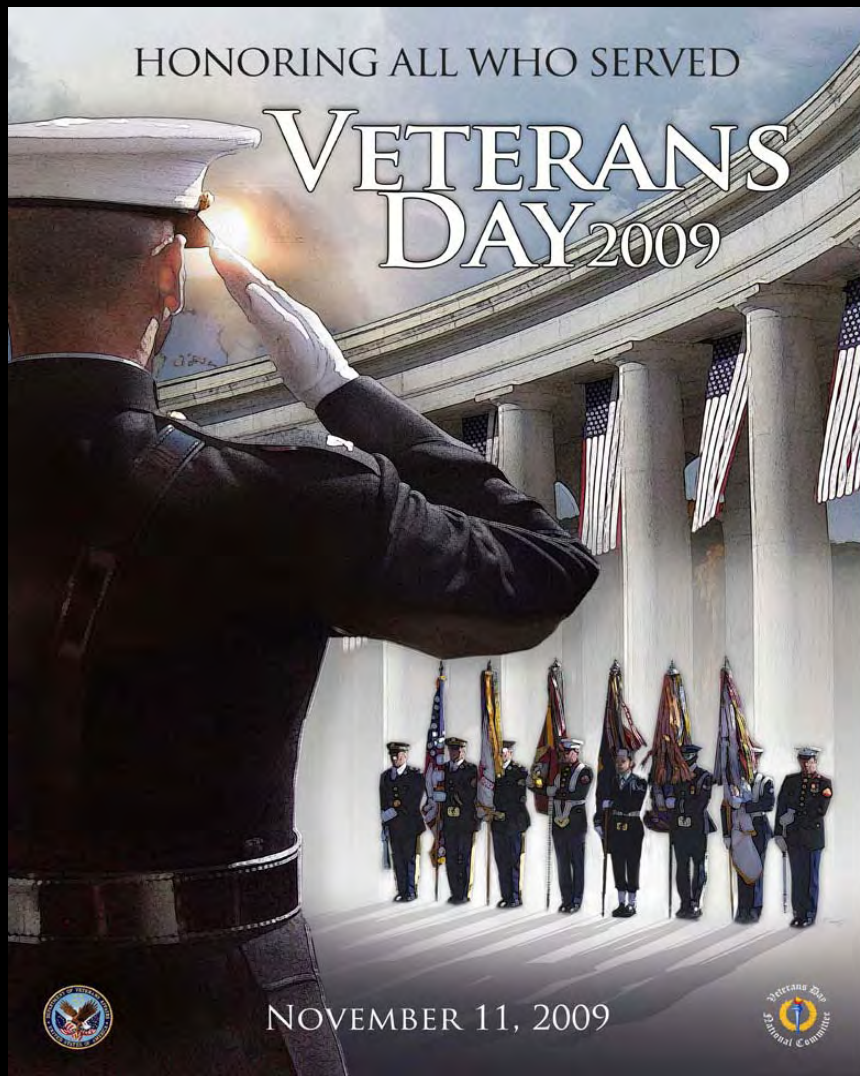


Points of Contact

- Director, Facilities Project Mgmt & Design
 - Mr. Charles Fanshaw
 - 703-993-9173
 - cfanshaw@gmu.edu
- Director, Campus Planning
 - Ms. Cathy Wolfe
 - 703-993-2610
- Director, Construction
 - Mr. Robert Endebrook
 - 703-993-2513



Happy Veteran's Day



Thanks for
your Service !